



Portland Place, W1B  
£1,500 p/w Furnished



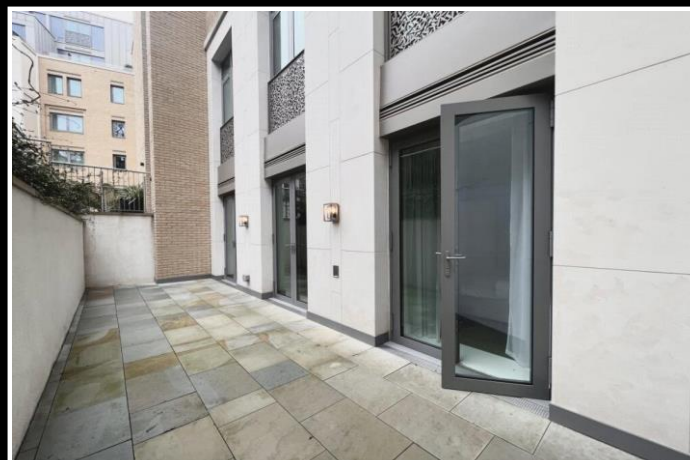
Portland Place, W1B  
£1,500 p/w Furnished

This is a rare opportunity to rent a superb apartment situated within one of London's most exclusive and impressive newly built schemes.

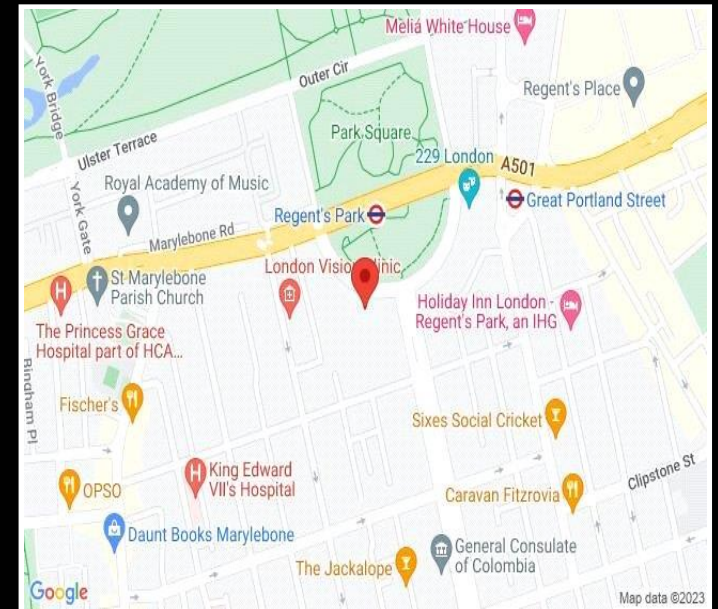
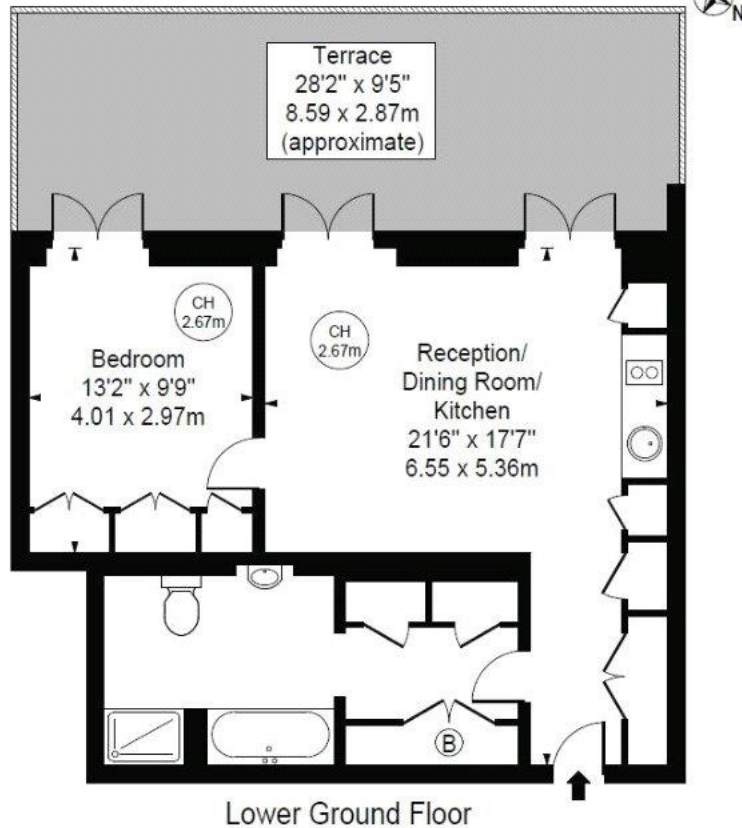
The property is situated on the garden level of an incredible block and comprises of a good size reception/dining space and open plan kitchen with state of the art appliances, a good sized bedroom both spaces have French doors leading onto a private landscaped terrace, And a walk in wardrobe which leads onto a large bathroom.

79 Portland Place is part of the world class development known as Regents Crescent, a newly built residence that benefits for 24 hour concierge, and facilities of the highest quality which include a phenomenal Pool & Spa, Cinema, Gym and more. The property is situated on the junction with Portland Place & Park Crescent meet, overlooking His Majesty's Regents Park which is often regarded as the jewel in the crown of his open recreational spaces. Marylebone Village and its array of shops, restaurants and superb amenities are a short walk from your front door, whilst world renowned Oxford Street is also nearby. Great Portland Street & Warren Street Stations are both nearby which provide a simple commute across the capital

Ref PCL230082



Approx. Gross Internal Area 576 Sq Ft - 53.51 Sq M



Energy Efficiency Rating		
	Current	Potential
Very energy efficient - lower running costs		
(92+) <b>A</b>		
(81-91) <b>B</b>	83	83
(69-80) <b>C</b>		
(55-68) <b>D</b>		
(39-54) <b>E</b>		
(21-38) <b>F</b>		
(1-20) <b>G</b>		
Not energy efficient - higher running costs		
<b>England, Scotland &amp; Wales</b>	EU Directive 2002/91/EC	

For clarification, we wish to inform prospective tenants that we have prepared these lettings particulars as a general guide. We have not carried out a detailed survey, nor tested the services, appliances and specific fittings. Room sizes are approximate and rounded: they are taken between internal wall surfaces and therefore include cupboards/shelves, etc. Accordingly, they should not be relied upon for carpets and furnishings.